

TUBE CONNECTORS

RK39

Tube connector in PA6 with a steel core and inner thread.

3-way connection (T-shaped) for square tubes.



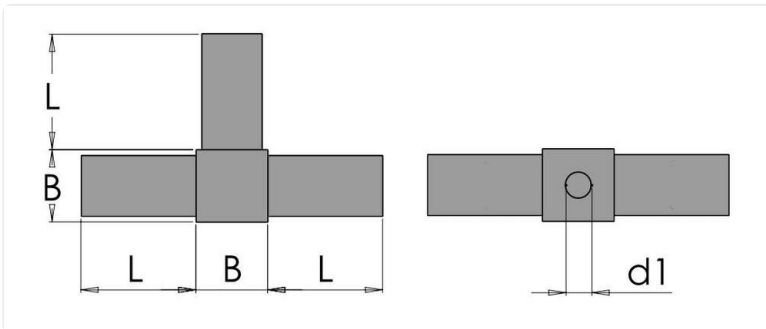
STOCK COLORS

Black

Additional RAL or custom colors on demand

ADDITIONAL INFO

Material: Thermoplastic



Article number	Material fasteners	Color	B	L	Tube external diameter	Tube thickness
RK39-901-25X25X1M8	-	Black	25	48	25X25	1.5
RK39-901-25X25X1M10	-	Black	25	48	25X25	1.5
RK39-901-30X30X2M8	-	Black	30	48	30X30	2.0
RK39-901-30X30X2M10	-	Black	30	48	30X30	2.0