

# THREADED INSERTS

GI51

Divisible threaded insert in PA6 for rectangular tubes. With nut.



## STOCK COLORS

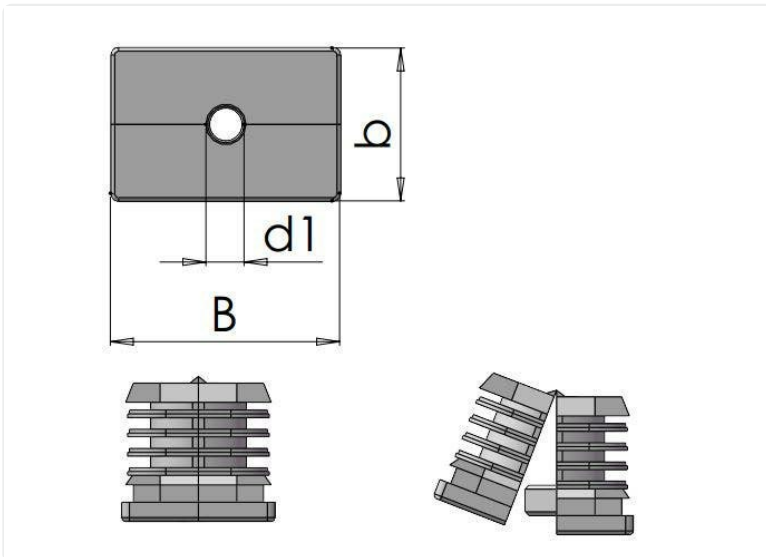
Black  
Additional RAL or custom colors on demand

## MATERIAL FASTENERS

Zinc-plated steel

## ADDITIONAL INFO

**Material:** Thermoplastic



Article number	Material fasteners	Color	B	b	d1	Tube external diameter	Tube thickness
GI51-25X20X2M8	-	Black	25	20	M8	25X20	1.5-2.0
GI51-30X20X2M8	-	Black	30	20	M8	30X20	1.5
GI51-35X25X2M8	-	Black	35	25	M8	35X25	1.5-2.0
GI51-35X25X2M10	-	Black	35	25	M10	35X25	1.5-2.0
GI51-40X20X2M6	-	Black	40	20	M6	40X20	1.5
GI51-40X20X2M8	-	Black	40	20	M8	40X20	1.5-2.0

Article number	Material fasteners	Color	B	b	d1	Tube external diameter	Tube thickness
GI51-40X25X2M8	-	Black	40	25	M8	40X25	2.0
GI51-40X30X2M10	-	Black	40	30	M10	40X30	1.5-2.0
GI51-45X25X2M10	-	Black	45	25	M10	45X25	1.5-2.0
GI51-50X25X2M10	-	Black	50	25	M10	50X25	1.5-2.0
GI51-50X30X2M8	-	Black	50	30	M8	50X30	1.5-2.0
GI51-50X30X2M10	-	Black	50	30	M10	50X30	1.5-2.0
GI51-50X30X2M12	-	Black	50	30	M12	50X30	1.5
GI51-50X40X2M10	-	Black	50	40	M10	50X40	1.5-2.0
GI51-60X30X2M10	-	Black	60	30	M10	60X30	1.5-2.0
GI51-60X30X2M12	-	Black	60	30	M12	60X30	1.5-2.0
GI51-60X40X2M10	-	Black	60	40	M10	60X40	1.5-2.0
GI51-70X25X2M10	-	Black	70	25	M10	70X25	2.0-2.5